

trotec

Laser and
Rotary
Materials
2023



/ SETTING NEW STANDARDS

The ideal material for each application!

Trotec offers solutions for almost all requirements in the field of engraving, cutting and marking. High-quality, innovative laser system solutions as well as highest standard consumables form this outstanding portfolio. We aim to assist our customers improve profitability and productivity by supplying Trotec materials which offer superior results first time, offering additional services such as our in house 'cut to size' service and providing a one stop shop solution, allowing our clients to purchase all their products via one call or email.

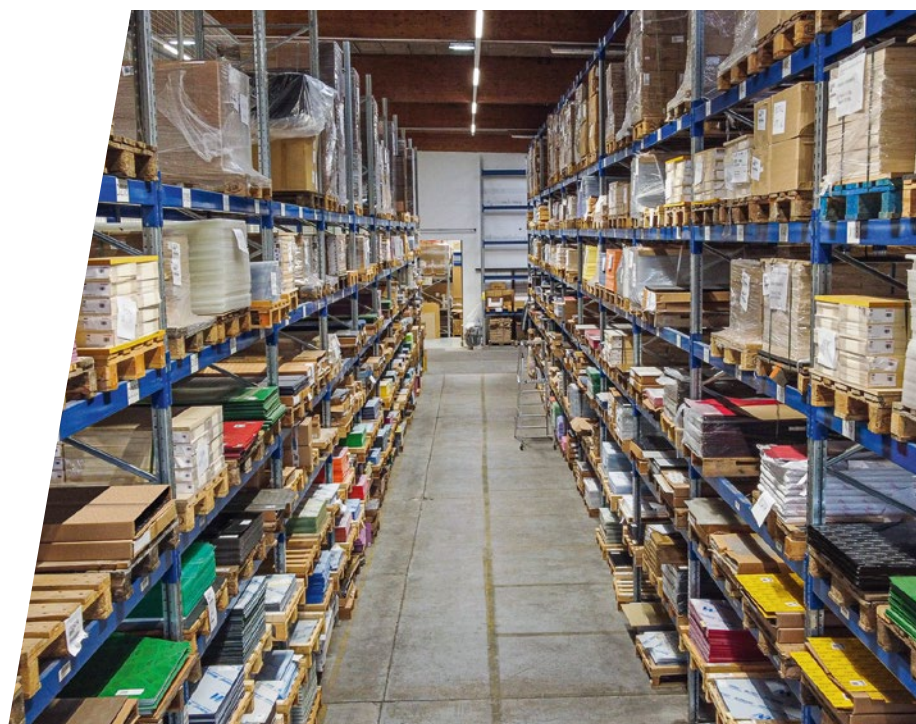
- Engrave efficiently with fewer passes
- Little residue exposed while engraving
- No sticky edges after laser cutting
- Minimal cleaning required
- Consistency in quality and colours
- Highly durable materials

We are proud to be manufacturer of a full range of Trotec laminates that is completed by additional high-quality products of selected suppliers. We want to make you more profitable by benefitting from this advantages:



Any color deviations between the images shown in the catalog and actual items are due to electronic depiction or typographical reasons and are not considered mistakes.

Please find our latest product range on our website.



Catalog Contents

Plastic

Laser + Rotary

- 6** TroLase
- 8** TroLase Metallic Plus
- 9** TroLase Metallic
- 10** TroLase Reverse
- 11** TroLase ADA Signage
- 12** TroLase Thins
- 15** TroLase Lights
- 16** TroLase Foil
- 17** LaserFlex

Rotary

- 20** TroPly
- 21** TroPly Metallic Plus

Acrylic

- 28** TroGlass Color Gloss + Neon
- 30** TroGlass Satins
- 32** TroGlass Reverse
- 33** TroGlass Mirror
- 34** TroGlass Clear
- 36** TroGlitter
- 37** TroGlass Pastel

Metal

- 40** Anodized aluminum
- 42** DuraBlack®
- 43** AlumaMark®
- 44** Stainless steel

Wood

- 48** Solid wood
- 49** Wood veneer
- 50** Plywood
- 51** MDF
- 52** TroCraft Eco
- 53** LaserCork

Leather

- 55** LaserLeather

Gifts

- 62** Laserable bottles
- 63** Mugs and tumblers
- 64** Laserable hip flask
- 66** Aluminum tags
- 68** Rounds

Supplies

- 74** Laser marking solutions
- 76** TroMask
- 78** Laser rubber sheets
- 79** Pins and magnets
- 80** Workholding mat
- 81** Advertising materials

Service

- 2** Icon description
- 82** Overview characteristics
- 84** Trotec laser machines

How to Read this Catalog

Sheet sizes & tolerances:

Sheet sizes are indicated in each product group description. Note: Minor dimension/color deviations can occur per batch (production-related).

When ordering full sheets, please consider the following tolerances:

TroLase, TroLase Metallic, TroLase Metallic Plus, TroLase Reverse, TroLase ADA Signage, TroLase Thins, TroLase Textures, TroPly, TroPly Metallic Plus, TroPly Satins, TroPly Ultra, TroPly Ultra Reverse

Tolerances: width $\pm 1,5$ mm;
length ± 3 mm

LaserWood

Tolerances: width and length: ± 1 mm
Thickness: -0,3 mm; + 0,5 mm

TroLase Lights

Tolerances: width +3 mm; -0 mm;
length +6 mm; -0 mm

TroGlass Series

Tolerances: width ± 3 mm;
length ± 3 mm
thickness (according to ISO 7823-1):
gauge 3 mm: $\pm 0,7$ mm
gauge 4 mm: $\pm 0,8$ mm
gauge 5 mm: $\pm 0,9$ mm
gauge 6 mm: ± 1 mm
gauge 8 mm: $\pm 1,2$ mm
gauge 10 mm: $\pm 1,4$ mm
gauge 15 mm: $\pm 1,9$ mm
gauge 20 mm: $\pm 2,4$ mm

Icon legend



Laser material

Plastic sheets made of acrylic are perfectly used for laser processing (laser engraving and laser cutting).



Rotary material

This material is suitable for processing with mechanical engraving devices.



Reverse engraving

This material is engraved from the back using mirrored graphics. The engraved area can be infilled or backlit to enhance the contrast against the colored background.



Front engraving

This material is engraved from the front side.



Exterior use

This material is UV-resistant and suitable for outdoor use. Of course, it can also be used for indoor applications.



Indoor use

This material is suitable for interior applications.



Adhesive possible

Adhesive backing can be applied on selected materials.



UV-Print-Icon

This material is especially suitable for UV/ digital printing.



Grey Icons

All symbols in grey mean that the respective application does not apply.

Cut to size legend



Cut to size

Articles of this product group can be ordered cut to your individual size.



Round corners

Articles of this product group can be ordered with rounded corners. Choose a radius and if the curve should look inside or outside.



Hole drilling

Articles of this product group can be drilled in various diameters.



Bevelled edges

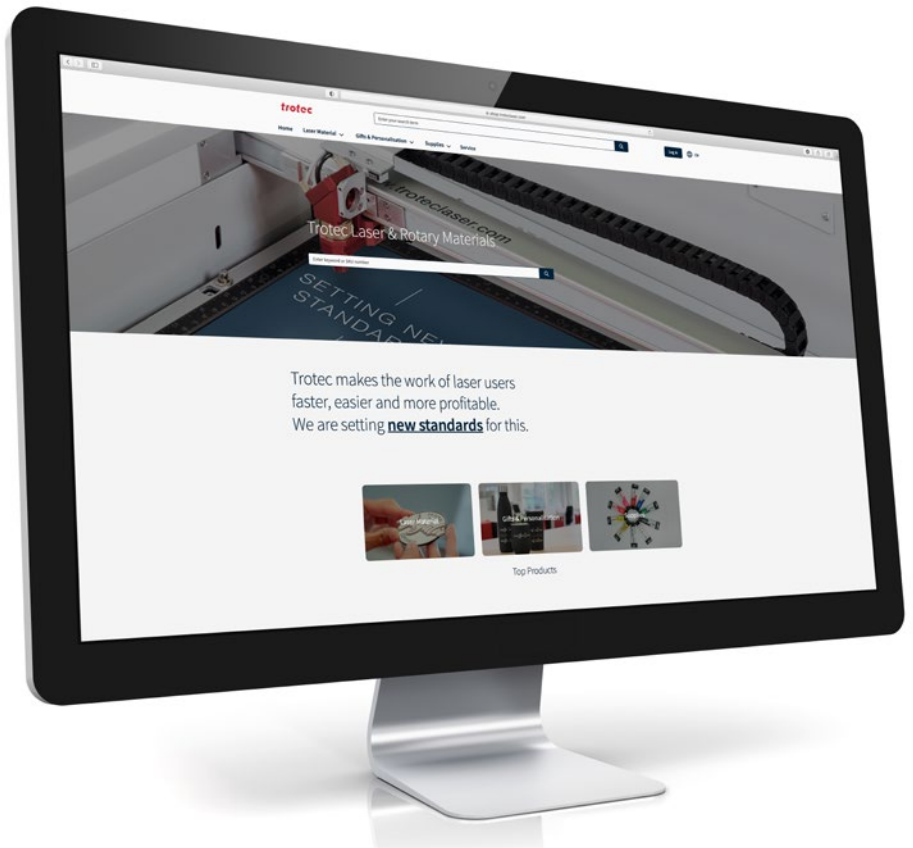
Articles of this product group can be ordered with bevelled edges.



Welcome to Our Webshop

You can quickly and easily purchase our high-quality laser and engraving materials online in our webshop at www.shop.troteclaser.com

In our webshop you will find a comprehensive assortment of products, up-to-date information about our materials, usage and processing tips, and practical sample instructions.



Count on fast delivery.



Have a complete overview of your online orders.



Order around the clock.



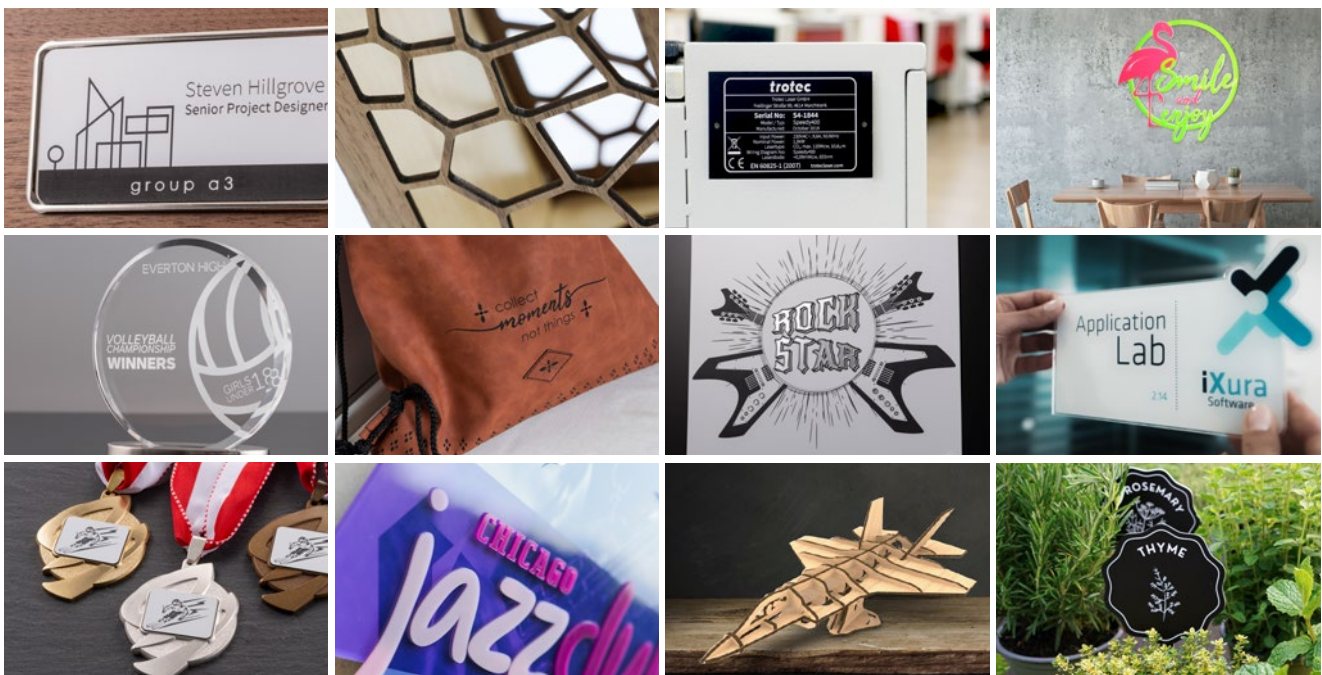
Benefit from the tips and tricks of our experts.



Learn exclusively about new products and offers.



Collect TroPoints and receive your discount.



TroLase Series

Trotec's laserable plastics are specifically designed for high-performance laser and rotary engraving. They have a micro surfaced coating on a high-quality extruded core, which allows for detailed engravings at a high production speed. Materials are combined with a low residue characteristic, which distinctly reduces your overall processing time and increases productivity. All products are carefully tested and optimised for your cost-saving, high-quality daily use. Our quality makes you more efficient and profitable. Within the Trotec laser and rotary materials portfolio, you will find a wide range of various colors, effects, gauges and wear and tear characteristics suitable for nearly any application.

Please note our stockkeeping tips on our webshop.





TroLase



Material Features

Material: modified acrylic, color coated, 2 ply / 3 ply

Finish: matte, gloss

Engraving depth: 0,08 mm

Cutting method: laser, saw, guillotine

Sheet size:

1/1	1245 x 616 mm
1/2	610 x 610 mm
1/4	610 x 305 mm

- UV-resistant, acrylic based material
- Detailed engraving at high production speed
- Superior composition minimizes residue and reduces need for cleaning
- Ideal for interior and exterior signs, badges, trophy plates, industrial signs

Cut to size service



White/Red
0,8 L206-203
86585
1,6 L206-206
71584



White/Blue
1,6 L205-206
71565



White/Black
0,8 L204-203
86561
1,6 L204-206
71546



Red/White
0,8 L602-203
86565
1,6 L602-206
71828



Sapphire/White
0,8 L502-203
86594
1,6 L502-206
71772



Purple/White
1,6 L582-206
71804



Burgundy/White
1,6 L622-206
71852



Blue/White
0,8 L512-203
86581
1,6 L512-206
71782



Black/White
0,8 L402-203
86563
1,6 L402-206
71747



Orange/White
0,8 L612-203
86564
1,6 L612-206
71841



Navy Blue/White
1,6 L552-206
71796



Smoke Grey/White
1,6 L312-206
71614



Orange/Black
1,6 L614-206
71846

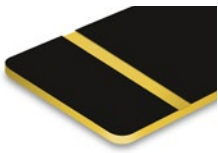


Green/White
0,8 L932-203
86596
1,6 L932-206
71946



English Walnut/White
1,6 L192-206
71515

*3.2mm thickness available on order.



Black/Gold
1,6 L417-206
71759



Black/Silver
1,6 L413-206
86587



Black/Red
1,6 L406-206
71756



Blush Pink/White
1,6 L672-206
149104



Powder Blue/White
1,6 L522-206
149102



Almond/Black
1,6 L854-206
71911



Pink/White
1,6 L662-206
86588



Evergreen/White
0,8 L912-203
86586
1,6 L912-206
71937



Gloss Black/White
1,6 L422-206
86580



Yellow/Red
1,6 L706-206
86590



Yellow/Black
0,8 L704-203
86562
1,6 L704-206
71864

3 Ply



White/Black/White
1,6 L204-306
91640

*3.2mm thickness available on order.

TroLase Metallic Plus



Material Features

Material: modified acrylic, color coated, 2 ply

Finish: brushed metal

Engraving depth: 0,08 mm

Cutting method: laser, saw, guillotine







Sheet size:

1/1	1245 x 616 mm
1/2	610 x 610 mm
1/4	610 x 305 mm

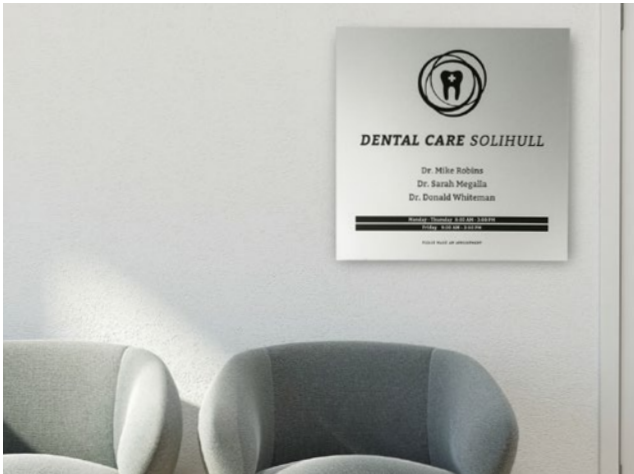
- Acrylic based material with an authentic metallic finish
- Thin top layer enables detailed engraving at high production speed
- Cost-effective, time-saving alternative to metal engraving
- Suitable for outdoor use, signs, badges, trophy plates, safety signs, funeral plates

Cut to size service



	<p>Brushed Stainless Steel/Black</p> <p>0,8 LMT+314-203 87112</p> <p>1,6 LMT+314-206 71615</p> <p>3,2 LMT+314-209 87106</p>		<p>Brushed Bright Nickel/Black</p> <p>1,6 LMT+364-206 87116</p> <p>3,2 LMT+364-209 87135</p>		<p>Brushed Copper/Black</p> <p>0,8 LMT+864-203 87136</p> <p>1,6 LMT+864-206 87114</p> <p>3,2 LMT+864-209 87141</p>
	<p>Brushed Stainless Steel/Blue</p> <p>1,6 LMT+315-206 87117</p> <p>3,2 LMT+315-209 87139</p>		<p>Brushed Stainless Steel/Red</p> <p>1,6 LMT+316-206 87118</p> <p>3,2 LMT+316-209 87146</p>		<p>Brushed Gold/Black</p> <p>0,8 LMT+764-203 87115</p> <p>1,6 LMT+764-206 71893</p> <p>3,2 LMT+764-209 87108</p>

TroLase Metallic



Material Features

Material: modified acrylic, color coated, 2 ply

Finish: brushed metal, smooth

Engraving depth: 0,08 mm

Cutting method: laser, saw, guillotine

Sheet size:

1/1	1245 x 616 mm
1/2	610 x 610 mm
1/4	610 x 305 mm

- Acrylic based laminate
- Authentic metallic finish
- Enables detailed engraving
- For interior signs, badges, trophy plates, safety signs or funeral plates

Cut to size service



Smooth Gold/Black
0,8 LMT714-203
 86661
1,6 LMT714-206
 86599
3,2 LMT714-209
 86662



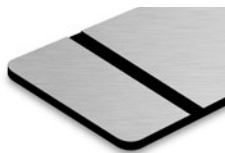
Brushed Aluminum/Black
0,8 LMT354-203
 86632
1,6 LMT354-206
 71700
3,2 LMT354-209
 86634



Brushed Copper/Black
0,8 LMT894-203
 86660
1,6 LMT894-206
 71931



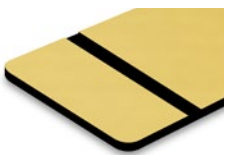
Brushed Gold/Black
0,8 LMT734-203
 86602
1,6 LMT734-206
 71881
3,2 LMT734-209
 92076



Brushed Silver/Black
0,8 LMT334-203
 86619
1,6 LMT334-206
 71625
3,2 LMT334-209
 86658



Brushed Deep Bronze/Black
1,6 LMT884-206
 86648



European Gold/Black
0,8 LMT754-203
 86600
1,6 LMT754-206
 71889
3,2 LMT754-209
 86649



Smooth Silver/Black
0,8 LMT344-203
 86598
1,6 LMT344-206
 86597
3,2 LMT344-209
 86656

TroLase Reverse



Material Features

Material: modified acrylic, reverse color coated, 2 ply

Finish: matte, gloss (gold and silver), brushed

Engraving depth: 0,08 mm

Cutting method: laser, saw

Sheet size:

1/1	1245 x 616 mm
1/2	610 x 610 mm
1/4	610 x 305 mm

- Transparent acrylic fascia with a colored coating on the reverse side
- Mirror-inverted engraving on the reverse side
- Fill engraved area with your choice of acrylic paint
- Perfect for multi-colored interior and exterior signs, safety signs, promotional and display signage

Cut to size service



Matte/Red
1,6 LR601-206
71810



Matte/White
1,6 LR201-206
71521



Matte/Silver
1,6 LR341-206
71632



Matte/Blue
1,6 LR511-206
71773



Matte/Black
1,6 LR401-206
71732



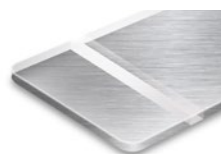
Gloss/Silver
1,6 LR340-206
71630



Matte/Yellow
1,6 LR701-206
71853



Gloss/Gold
1,6 LR710-206
71872



Brushed/Silver
1,6 LR351-206
71684

TroLase ADA Signage



Material Features

Material: modified acrylic, 1 ply

Finish: matte

Cutting method: laser, saw, guillotine

Sheet size:

1/1	1245 x 616 mm
1/1*	1220 x 610 mm
1/2	610 x 610 mm
1/4	610 x 305 mm

- Solid, dyed, acrylic based material for indoor and outdoor use
- Popular material for the production of braille and tactile signage
- Ideal for cutting out letters and for creating 3-dimensional signs
- Thinner options are a popular medium for architectural model making

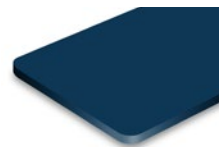
Cut to size service



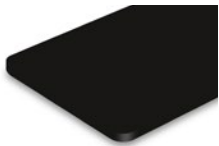
Red
0,8 LS601-103
71806
1,6 LS601-106
71807



Blue
0,8 LS501-103
71767
1,6 LS501-106
71768



Marine Blue
1,6 LS502-106
86514



Black
0,8 LS401-103
71727
1,0 LS401-104
86504
1,6 LS401-106
71729
3,2 LS401-109
71730



Bright White
0,8 LS204-103
71526
1,0 LS204-104
86412
1,6 LS204-106
71527
3,2 LS204-109
71528



White
0,8 LS201-103
71519
1,0 LS201-104
86411
1,6 LS201-106
86506



Yellow
1,6 LS701-106
86526



Silver
0,8 LS304-103
86517



Clear
0,8 LS101-103
71505
1,6 LS101-106
71507

TroLase Thins



Material Features

Material: modified acrylic, color coated, 1 ply / 2 ply

Finish: matte, gloss, brushed metal

Engraving depth: 0,08 mm

Cutting method: laser, saw, guillotine

Sheet size:

1/1	1245 x 614 mm
1/2	610 x 610 mm
1/4	610 x 305 mm

- Extremely flexible and ideally suited for curved surfaces
- Acrylic base and thin foiled surface enable detailed engravings
- Elegant engravings for interior signs, badges, trophy and award plates as well as industrial signage
- Solid single ply white and black options are a proven medium for 3D model makers

Cut to size service



Brushed Gold/Black
0,5 LT734-202
86537



Brushed Copper/Black
0,5 LT894-202
71927



Yellow/Black
0,5 LT744-202
71854



European Gold/Black
0,5 LT754-202
71885



Brushed Silver/Black
0,5 LT334-202
86544



Red/White
0,5 LT602-202
71814



Trophy Gold/Black
0,5 LT794-202
86539



Trophy Silver/Black
0,5 LT394-202
86541



Blue/White
0,5 LT512-202
71774



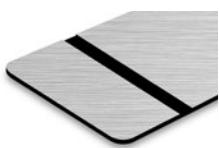
Deep Bronze/Black
0,5 LT884-202
71917



Smooth Silver/Black
0,5 LT344-202
86543



Black/White
0,5 LT402-202
71735



Brushed Aluminum/Black
0,5 LT354-202
71688



White/Black
0,5 LT204-202
71529



Black/Silver
0,5 LT413-202
91642



Port Wine/Gold
0,5 LT677-202
86552



Celestial Blue/Gold
0,5 LT577-202
86540



Black/Gold
0,5 LT417-202
71757

1 ply

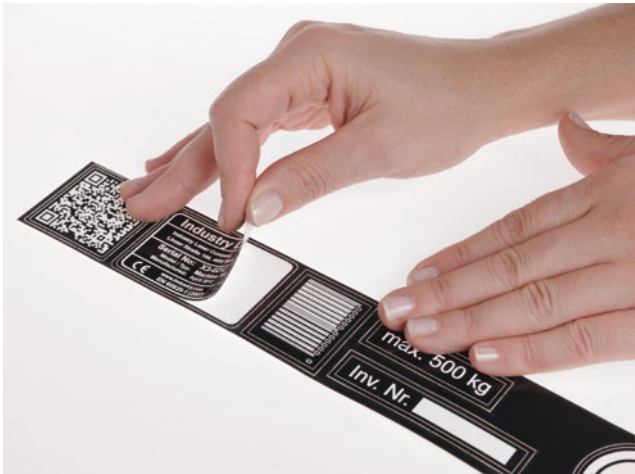


White single ply
0,5 LT202-102
86542



Black single ply
0,5 LT404-102
86545

TroLase Lights



Material Features

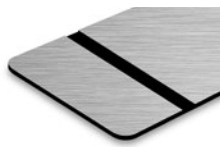
Material: PET-foil, 2 ply
Finish: gloss, brushed metal
Engraving depth: 0,04 mm
Cutting method: laser, guillotine
Sheet size: 600 x 305 mm

- Highly flexible and robust film with an adhesive coating on the reverse
- Adheres perfectly to various materials such as metals, plastic, rubber, and wood
- Popular material in industry and commerce
- Perfect for labels, stickers, badges as well as for trophy plates

Cut to size service



Smooth Gold/Black
0,1 LL74-201
71875



Brushed Silver/Black
0,1 LL63-201
71621



White/Black
0,1 LL62-201
71531



Brushed Brass/Black
0,1 LL64-201
71891



Smooth Silver/Black
0,1 LL73-201
71641



Yellow/Black
0,1 LL68-201
86554



Brushed Bronze/Black
0,1 LL69-201
71919



Black/Silver
0,1 LL75-201
71762



Black/White
0,1 LL61-201
71738



Black/Gold
0,1 LL65-201
71765

TroLase Foil



Material Features

Material: modified acrylic foil, 2 ply
Finish: matte, gloss, metallic
Engraving depth: 0,04 mm
Cutting method: laser, guillotine
Sheet size: 610 x 305 mm

- Thin, two-layer, flexible engraving material featuring a micro surfaced coating on an acrylic core
- It comes with an adhesive backing and is UV stable
- Allows for special editing options, such as kiss-cutting, to simplify the work process
- Ideal for trophy and industrial labeling, functional signage and custom stickers

Cut to size service



White/Black
0,2 139687



Green/White
0,2 139691



Gold brushed/Black
0,2 139695



Red/White
0,2 139688



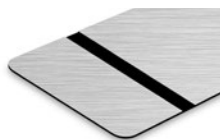
Yellow/Black
0,2 139692



Copper brushed/Black
0,2 139696



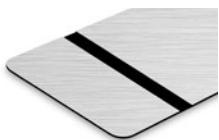
Blue/White
0,2 139689



Stainless steel brushed/ Black
0,2 139693



Black matte/White
0,2 139685



Nickel brushed/Black
0,2 139694



Black glossy/White
0,2 139686

LaserFlex



Material Features

Material: polyurethan foil on transfer film

Finish: matte

Engraving depth: 0,04 mm

Cutting method: laser, guillotine

Sheet size: 420 x 297 mm (A3)

- Suited for customising textiles
- Finest details with intricate motifs can be achieved
- To be applied to textiles using a transfer press
- Ideal for T-shirts, fabric bags, cotton, polyester, blended fabrics
- Less suitable for nylon and coated textiles



Cut to size service



White
0,1

LF200
65905



Red
0,1

LF600
65942



Black
0,1

LF400
65938



Recommended transfer conditions:

- Temperature: 165 °C
- Duration: 17 seconds
- Allow transfer film to cool for a few seconds before removing.

Handling and storage:

- LaserFlex film can be washed at up to 60 °C. Any residues can be removed by washing.
- Store product in dry place.

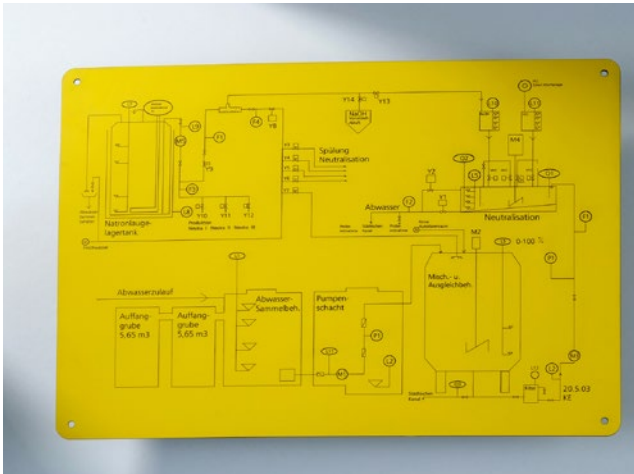
TroPly Series

Our rotary engraving materials features a range of products for multiple applications. Product properties range from thin surfaces for intricate detail engraving up to strong, robust surfaces used in more demanding environments. Some of Trotec's TroPly materials also have a reflection-free surface, which allows for clear and easy-to-read designs to be created from even the smallest engraved images.





TroPly



Material Features

Material: ABS, 2 ply / 3 ply

Finish: matte

Engraving depth: 0,08 mm

Cutting method: saw, guillotine

Sheet size:

1/1	1245 x 616 mm
1/2	610 x 610 mm
1/4	610 x 305 mm

- Features a thin surface coating
- The reflection-free surface allows clear and easy-to-read designs
- An ideal choice for an array of interior applications, particularly when a high degree of detail is required
- Perfect for information and safety signs, trophy plates as well as for badges



Cut to size service



Yellow/Black
0,8 P744-203
86676
1,6 P744-206
71883



White/Black
0,8 P204-203
86664
1,6 P204-206
71534



Red/White
1,6 P602-206
71818



Blue/White
1,6 P512-206
71777



Navy blue/White
1,6 P552-206
71795



Green/White
1,6 P932-206
71940



Black/White
0,8 P402-203
86665
1,6 P402-206
71742

3 ply



White/Black/White
3,2 P204-309
71554

TroPly Metallic Plus



Material Features

Material: ABS, 2 ply
Finish: brushed and smooth metal
Engraving depth: 0,08 mm
Cutting method: saw, guillotine
Sheet size:

1/1	1245 x 616 mm
1/2	610 x 610 mm
1/4	610 x 305 mm

- Metallic effect laminate with a scratch resistant top coating
- Features a special protective layer
- Particularly resistant to scratches and wear
- Suitable for trophy and funeral plates, information and interior signs

Cut to size service



Brushed Gold/Black
0,8 PMT+734-203
159966
1,6 PMT+734-206
71880



Brushed Silver/Black
1,6 PMT+334-206
71624



Smooth Silver/Black
0,8 PMT+344-203
159964
1,6 PMT+344-206
71644



Brushed European Gold/Black
1,6 PMT+754-206
71888



Brushed Aluminum/Black
0,8 PMT+354-203
159965
1,6 PMT+354-206
71699

TroGlass Series

Our TroGlass acrylic series is available in an extensive assortment of colors, in variations of transparent, fluorescent, translucent and non-transparent, as well as different surface structures. The transparent, fluorescent and translucent colors offer constant light transmission superior to similar glass colors. The wide range of colors and different surface characteristics make Trotec's acrylic glass the number 1 choice for outstanding and eye-catching applications. Please consider: thickness tolerances according to the table on page 2.





/ SETTING NEW STANDARDS

TroGlass Color Gloss



Material Features

Material: cast acrylic

Finish: gloss

Translucency: transparent, fluorescent, translucent, non-transparent

Cutting method: laser, saw

Sheet size: $\frac{1}{4}$ 1216 x 606 mm (metallic: 1224 x 610 mm)
 $\frac{1}{2}$ 606 x 606 mm (metallic: 610 x 610 mm)
 $\frac{3}{4}$ 606 x 301 mm (metallic: 610 x 303 mm)

- Constant light transmission superior to similar glass colors
- Glossy finish on both material sides
- High impact resistance
- Shop fitting, interior design or illumination and lighting are typical applications

Cut to size service



transparent



Glass Look
3,0 117143



Red
3,0 117131



Ice Blue
3,0 117132



Yellow
3,0 117129



Green
3,0 117139



Blue
3,0 117133



Orange
3,0 117130



Dark Green
3,0 117140

neon



Pink
3,0 162490



Green
3,0 162513



Yellow •
3,0 162491

- as long as stock lasts

fluorescent



Green fluorescent
3,0 117137



Red fluorescent
3,0 117136



Ice Blue fluorescent
3,0 117138

non-transparent



White
3,0 117070



Grey
3,0 117127



Black
3,0 117128

translucent



White
3,0 117069



Fuchsia
3,0 117105



Sky Blue
3,0 117125



Yellow
3,0 117071



Green
3,0 117123



Blue
3,0 117126



Orange
3,0 117103



Dark Green
3,0 117124

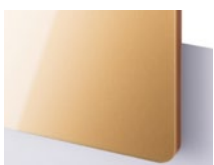


Lilac
3,0 117141



Red
3,0 117104

greencast metallic outdoor use



Gold
3,0 129875



Silver
3,0 129877

greencast metallic indoor use

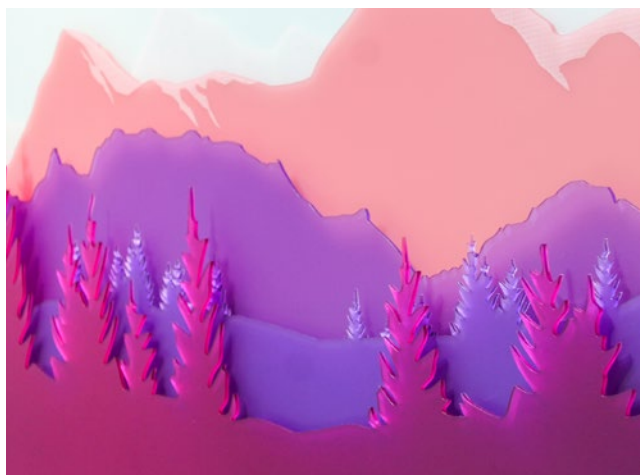


Bright Silver
3,0 129878



Anthracite-Silver
3,0 129879

TroGlass Satins



Material Features

Material: cast acrylic
Finish: matte
Translucency: translucent, non-transparent
Cutting method: laser, saw
Sheet size: $\frac{1}{1}$ 1216 x 606 mm
 $\frac{1}{2}$ 606 x 606 mm
 $\frac{1}{4}$ 606 x 301 mm

- Satin surface on both sheet sides
- Elegant and soft feeling and appearance
- High light transmission
- Ideal for illumination and backlighted signs, POS displays, interior design

Cut to size service



Translucent



Clear
3,0 117034



Light Pink
3,0 117037



Blue
3,0 117040



Yellow
3,0 117052



Fuchsia
3,0 117068



Aquamarine
3,0 117035



Bright Orange
3,0 117054



Violet
3,0 117041



Lemon Green
3,0 117057



Red
3,0 117038

Non-transparent



White
3,0 117055



Black
3,0 117059

Night & Day



Night & Day
3,0 117147

LED



White matte
3,0 117208



Special Product TroGlass Night & Day: allows the creation of sophisticated signs, giving the possibility of having 2 colors in the same product:

- black when not backlighted
- bright when the sign is backlighted

TroGlass LED is an optimised cast acrylic sheet, developed to adjust itself to the particularity of LED lighting:

- Colors are formulated to meet the wavelength of LEDs: the sheets maintain the same color tone with backlights being turned on and off.
- It allows a high light transmission. The strong diffusion characteristics eliminate spot effects.

TroGlass Reverse



Material Features

Material: Cast acrylic with back-coating, 2 ply

Finish: gloss

Engraving depth: 0,08 mm

Cutting method: laser, saw

Sheet size:

$\frac{1}{1}$	1228 x 610 mm
$\frac{1}{2}$	610 x 610 mm
$\frac{1}{4}$	610 x 304 mm

- Transparent acrylic with a colored coating on the reverse side
- Reverse engraved areas can be infilled with colors or backlighted
- Black backing reduces cleaning time and enhances depth of color
- Ideal for multi-colored interior and exterior signs, safety signs, promotional and display signage

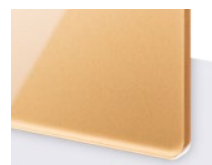
Cut to size service



Gloss/White
3,0 TG4-200
 20625
5,0 TG5-200
 20632



Gloss/Red
3,0 TG4-600
 20630



Gloss/Bronze Gold
3,0 TG4-700
 119375
5,0 TG5-700
 119377



Gloss/Silver
3,0 TG4-330
 20627
5,0 TG5-330
 20633



Gloss/Blue
3,0 TG4-500
 20629
5,0 TG5-500
 20635



Gloss/Gold
3,0 TG4-710
 20631
5,0 TG5-710
 20637

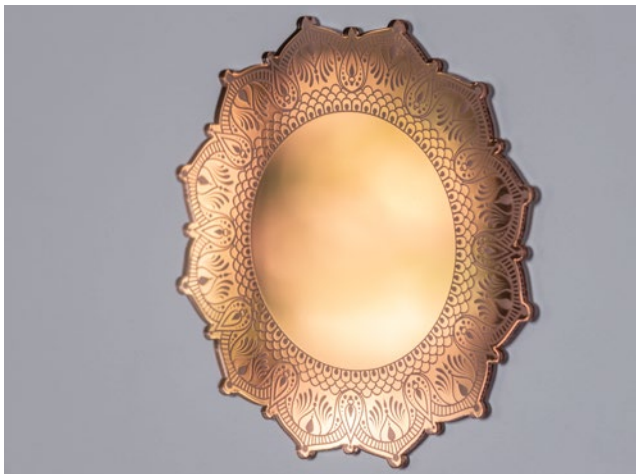


Gloss/Green
3,0 TG4-931
 65005



Gloss/Black
3,0 TG4-400
 20628
5,0 TG5-400
 20634

TroGlass Mirror



Material Features

Material: extruded acrylic

Finish: gloss, mirroring

Cutting method: laser, saw

Sheet size:

1/1	1220 x 610 mm
1/2	608 x 610 mm
1/4	608 x 303 mm

- TroGlass Mirror is an extruded acrylic glass with a reflective surface
- Perfect alternative to real glass mirror because they are lighter and have a higher breakage resistance
- Mirror-inverted engraving on the reverse side
- Used for wall decorations, jewellery, displays, interior design, ..

Cut to size service



Silver
2,9 144081



Gold
2,9 144142



Rosé gold
2,9 144143

TroGlass Clear



Material Features

Material: cast acrylic, 1 ply

Finish: gloss

Cutting method: laser, saw

Thickness and sheet sizes (mm):

	1/4	1/2	3/4
2 - 5, 10, 15, 20:	1216 x 606	606 x 606	606 x 301
6, 8:	1200 x 598	598 x 598	598 x 297

- Perfect optical clarity and therefore great alternative to glass
- Formable, UV-stable and hard-wearing
- Polished laser cut edges, no post-processing necessary
- Ideal for interior and exterior signs, promotional & display signage

Cut to size service



Clear
20,0 166528



Clear
15,0 166527



Clear
10,0 166526



Clear
8,0 121865



Clear
6,0 121863



Clear
5,0 121862



Clear
4,0 121801



Clear
3,0 121800



Clear
2,0 5266

TroGlass XT



Material Features

Material: extruded acrylic, 1 ply

Finish: gloss

Cutting method: laser, saw

Sheet size:

$\frac{1}{1}$	1216 x 606 mm
$\frac{1}{2}$	606 x 606 mm
$\frac{1}{4}$	606 x 301 mm

- Transparent, extruded acrylic glass with low thickness tolerance
- Fantastic light transmission and excellent resistance to outdoor weathering
- Material of choice when high thickness accuracy is of utmost importance
- Used for POS displays, signage, model making and for pluggable constructions



Clear
5,0 162787



Clear
3,0 162785



Clear
2,0 163463

TroGlitter



Material Features

Material: cast acrylic

Finish: gloss

Cutting method: laser, saw

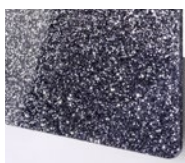
Sheet size: $\frac{1}{1}$ 1020 x 600 mm
 $\frac{1}{2}$ 510 x 600 mm
 $\frac{1}{4}$ 510 x 300 mm

- Cast acrylic in which glitter particles are evenly distributed throughout the material
- Glitter Acrylic offers massive opportunities for creative minds and designers, and they can explore new visual effects
- Offered in a variety of colors, and the material is color stable with no bleaching or fading
- Ideal for sales displays, novelties or even lettering applications

Cut to size service



Red
3,0 153705



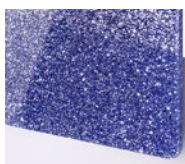
Black
3,0 144645



Silver
3,0 144640



Dark Red
3,0 144643



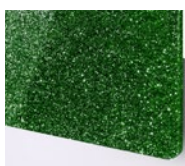
Blue
3,0 144646



Gold
3,0 144641



Pink
3,0 144644



Green
3,0 153706



Red/Gold
3,0 194039



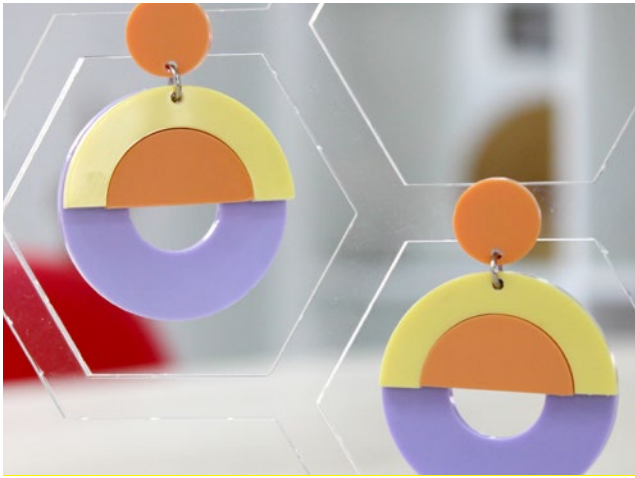
Light Blue/Gold
3,0 194040



Purple/Black
3,0 194041

- as long as stock lasts

TroGlass Pastel



Material Features

Material: cast acrylic

Finish: matte, gloss

Translucency: opak, intransparent

Cutting method: laser, saw

Sheet size:

$\frac{1}{1}$	1216 x 606 mm
$\frac{1}{2}$	606 x 606 mm
$\frac{1}{4}$	606 x 301 mm

- Flexibility of use due to one gloss and one matte side
- Excellent physical properties of cast acrylic sheet
- Material is color stable with no bleaching or fading
- Typical applications are: visual communication & retail, interior design, shop fitting

Cut to size service



Candy Colors



Mint
3,0 160823



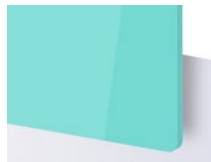
Yellow
3,0 160825



Orange •
3,0 160828



Lilac
3,0 160824



Turquoise
3,0 176307



Light Blue
3,0 160829



Raspberry
3,0 176304



Lavender
3,0 176306



Pink
3,0 160826

Earth Tones



Nude
3,0 194033
Xxxx



Ivory
3,0 194034
Xxxx



Cherry
3,0 194035
Xxxx



Coconut
3,0 194036
Xxxx



Olive
3,0 194037
Xxxx



Stone
3,0 194038
Xxxx

- as long as stock lasts

Metal

Trotec offers metal products for both laser engraving and mechanical engraving. One product group is the anodized aluminum, which features a protective anodised coating that remains intact during laser processing. The image contrast is caused by the removal of the colored coating and almost photographic qualities can be achieved. Additionally, a detailed white engraved image is created. We offer metal for engraving in different colors and also with a matte or a gloss surface.





30110-30

trotec

www.trotec-materials.com | www.troteclaser.com

Anodized Aluminum



Material Features

Material: anodized aluminum

Finish: matte, gloss

Cutting method: saw, guillotine

Sheet size: 1000 x 500 mm

- Suitable for both for engraving with a CO₂ laser and with mechanical engraving devices
- Image contrast is caused by the removal of the colored coating
- Almost photographic qualities can be achieved
- Please consider that the Standard Line is less robust due to the thinner anodized coating
- Typical applications are type plates, signs with advertising impact and ID tags

Cut to size service



Premium Line

Aluminum Satin Silver matte

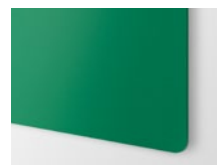


0,5	30105-00
	5277
1,0	30110-00
	3503
1,5	30115-00
	3544
2,0	30120-00
	4256
3,0	30130-00
	4806



Black matte

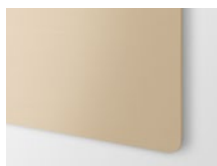
0,5	30105-10
	4671
1,0	30110-10
	3504
1,5	30115-10
	3545
2,0	30120-10
	4187
3,0	30130-10
	9075



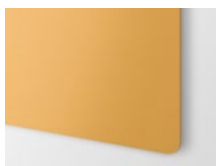
Green matte

0,5	30105-40
	34356
1,0	30110-40
	3509
1,5	30115-40
	3548
2,0	30120-40
	4185
3,0	30130-40
	65331

Nickel Silver matte



0,5	30105-50
	65308
1,0	30110-50
	3540
1,5	30115-50
	3549
2,0	30120-50
	65320
3,0	30130-50
	65326



Gold matte

0,5	30105-60
	65310
1,0	30110-60
	3541
1,5	30115-60
	3560
2,0	30120-60
	4184
3,0	30130-60
	15890



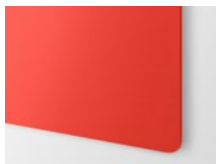
Blue matte

0,5	30105-30
	4447
1,0	30110-30
	3508
1,5	30115-30
	3547
2,0	30120-30
	4186
3,0	30130-30
	65332

Stainless Steel matte

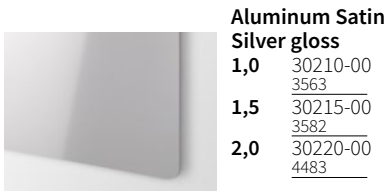


1,0	30110-90
	12659
1,5	30115-90
	4603
2,0	30120-90
	13667

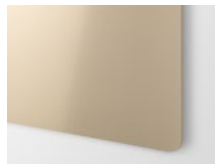


Red matte

0,5	30105-20
	34357
1,0	30110-20
	3505
1,5	30115-20
	3546
2,0	30120-20
	4763
3,0	30130-20
	65333



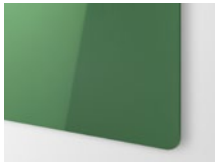
**Aluminum Satin
Silver gloss**
1,0 30210-00
 3563
1,5 30215-00
 3582
2,0 30220-00
 4483



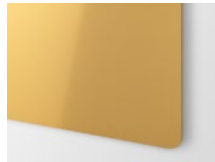
Nickel Silver gloss
1,0 30210-50
 3568
1,5 30215-50
 3588
2,0 30220-50
 65301



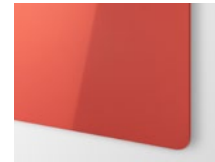
Black gloss
1,0 30210-10
 3564
1,5 30215-10
 3583
2,0 30220-10
 46422



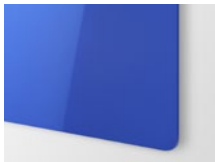
Green gloss
1,0 30210-40
 3567
1,5 30215-40
 3587
2,0 30220-40
 65304



Gold gloss
1,0 30210-60
 3569
1,5 30215-60
 3589
2,0 30220-60
 4760



Red gloss
1,0 30210-20
 3565
1,5 30215-20
 3585
2,0 30220-20
 65307



Blue gloss
1,0 30210-30
 3566
1,5 30215-30
 3586
2,0 30220-30
 65306

Standard Line



Standard natural
1,0 122787



During the manufacturing process of a whole panel, two small spots are created at the edge where the material is not covered with an anodized layer.

DuraBlack®



Material Features

Material: anodized aluminum

Finish: matte

Cutting method: saw, guillotine

Sheet size: 508 x 609 mm

- Coated aluminum with a black surface
- Can be marked in white with a CO₂ laser
- Particularly resistant to environmental influences (weathering, salt water, chemicals, etc.)
- Conforms with various industrial and military standards, including MIL-STD 130N, A-A-50271 (MIL-P-514D) and MIL-STD-15024F, Type L



Cut to size service



Black matte
0,5 77795

AlumaMark®



Material Features

Material: anodized aluminum

Finish: matte

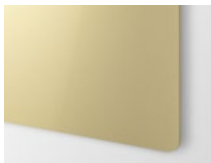
Cutting method: saw, guillotine

Sheet size: ⁽¹⁾ 508 x 609 mm
⁽²⁾ 305 x 508 mm

- Coated aluminum
- Can be marked in black with a CO₂ laser
- Even lower laser power levels can create a high-contrast engraving
- Typically used for interior signs, name plates, badges, trophy signs and labels



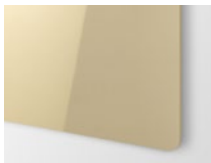
Cut to size service



Satin Gold ⁽¹⁾
0,5 3948



Satin Silver ⁽¹⁾
0,5 3947



Mirror Gold ⁽²⁾
0,5 47639



Mirror Silver ⁽²⁾
0,5 47638

Stainless Steel



Material Features

Material: stainless steel - NIRO ISO 1.4301/ AISI 304 brushed

Finish: brushed

Cutting method: guillotine

Sheet size: 1000 x 500 mm

- Provides excellent corrosion resistance
- Highly resistant to mechanical and chemical stresses, as well as high and variable temperatures
- Allows for permanent, black markings with a CO₂ laser in combination with markSolid, or direct with a fibre laser
- Try our cut-to-size service for stainless steel



Cut to size service



NIRO 1.4301
Brushed
0,8 146041



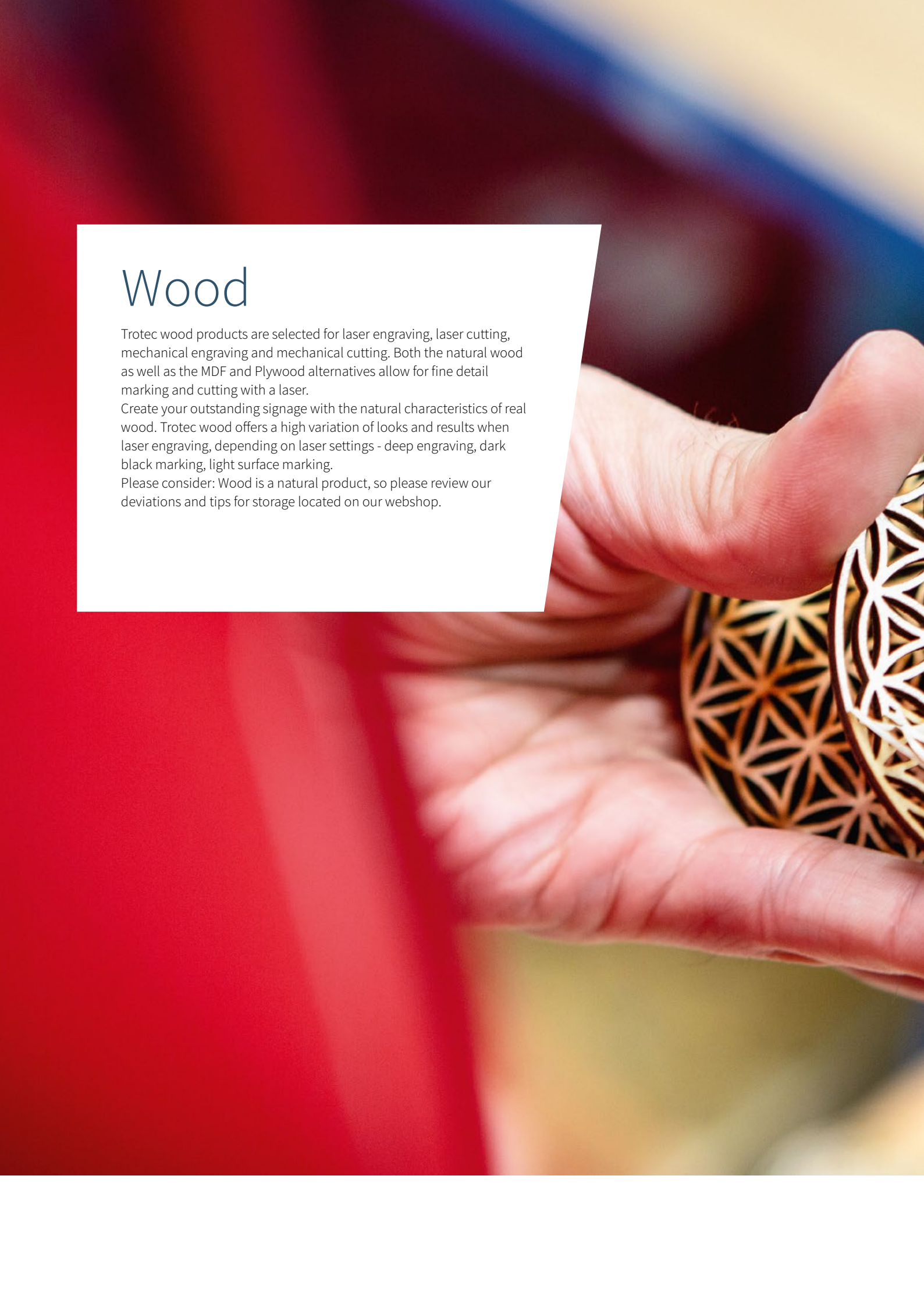
For a black laser engraving on blank stainless steel using a CO₂ laser we recommend the use of our marking solutions (e.g. markSolid spray/paste). Alternatively, a black marking can be created with a fiber laser.

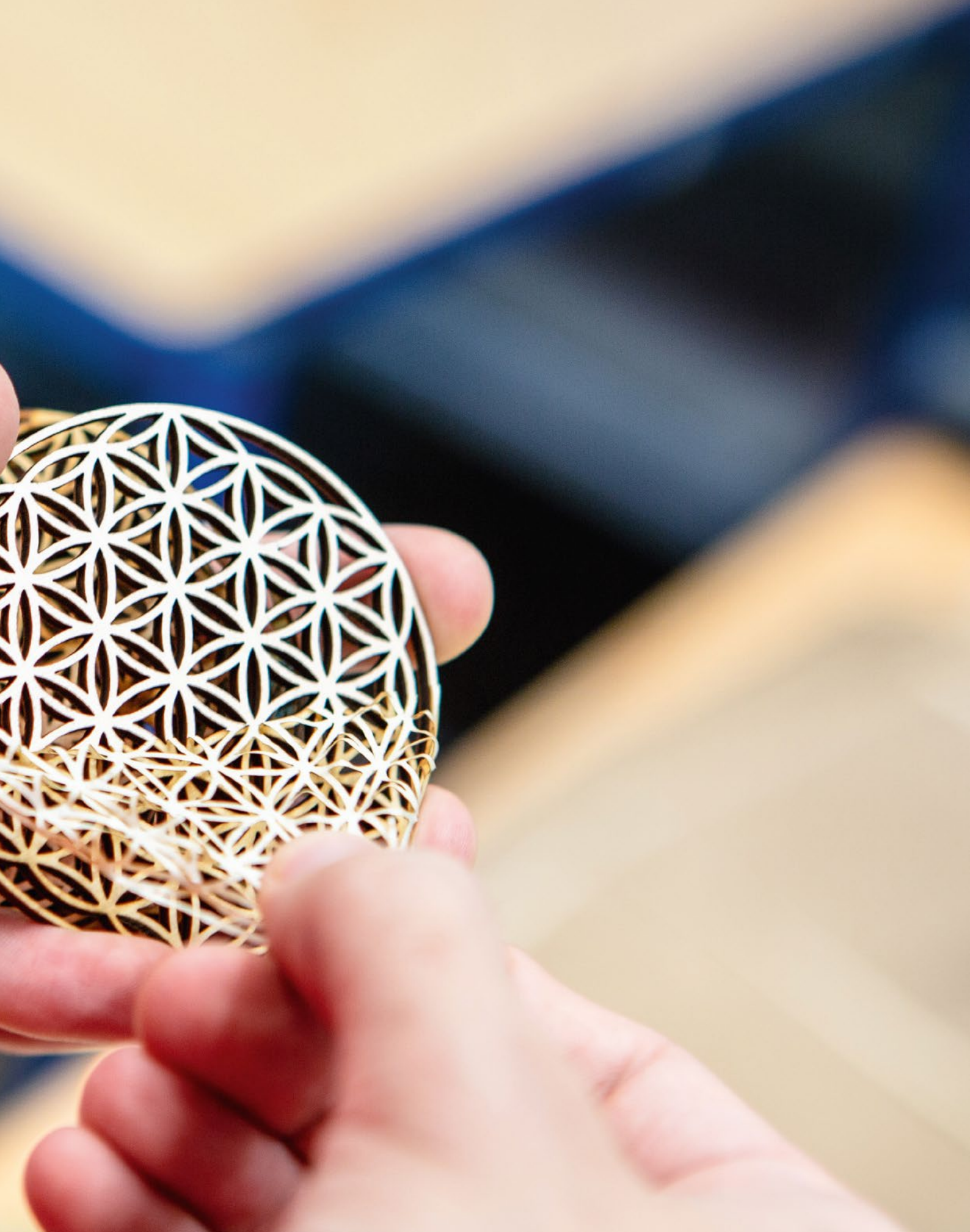
Wood

Trotec wood products are selected for laser engraving, laser cutting, mechanical engraving and mechanical cutting. Both the natural wood as well as the MDF and Plywood alternatives allow for fine detail marking and cutting with a laser.

Create your outstanding signage with the natural characteristics of real wood. Trotec wood offers a high variation of looks and results when laser engraving, depending on laser settings - deep engraving, dark black marking, light surface marking.

Please consider: Wood is a natural product, so please review our deviations and tips for storage located on our webshop.





/ SETTING NEW STANDARDS

Solid Wood



Material Features

Material: solid wood

Finish: smooth, matte and lacquered surface

Cutting method: saw, laser

Sheet size: 600 x 300 mm

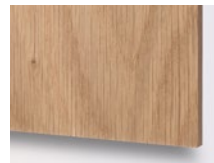
- Ideally suited for the requirements of laser processing
- Smooth, matte surface offers an authentic high quality appearance and durability
- Can be used for a multitude of applications such as small interior signage, interior decorations, fashion accessories and promotional giftware



Cut to size service



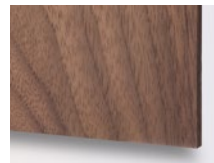
Maple
5,0 120182



Oak
5,0 120183



Cherry
5,0 120185



Walnut
5,0 120186



Alder
5,0 120184



Wood is a living, natural material and each panel is unique. Differences in structure and appearance within a panel can occur. We recommend to allow time for the wood acclimatise to its new environment before processing. Storage should be in an area with constant temperature/humidity.

Wood Veneer



Material Features

Material: Veneered wood sheets
Finish: smooth, matte and lacquered surface
Cutting method: saw, laser
Sheet size: 600 x 300 mm

- Elegant, smooth, matte surface
- It comes with a fibre board core
- Real wood laminated on both sides
- Suitable for a wide range of applications - interior signs, gifts, architectural model making, arts and crafts

Cut to size service



Cherry
3,0 119801



Maple
3,0 119798



Oak
3,0 154946



Bamboo
3,0 119799



Walnut
3,0 119952



Birch
3,0 119800



Wood is a living, natural material and each panel is unique. Differences in structure and appearance within a panel can occur. We recommend to allow time for the wood acclimatise to its new environment before processing. Storage should be in an area with constant temperature/humidity.

Plywood



Material Features

Material: Plywood poplar

Finish: untreated

Cutting method: laser, saw

Sheet size: 600 x 300 mm (pack of 10)

- Combines lightweight characteristics with improved dimensional stability
- Untreated, bright surface
- Ideal for architectural model making, prototyping, giftware, toys, arts and crafts, furniture



Cut to size service



600 x 300 mm

3,0 68987

6,0 68990



Wood is a living, natural material and each panel is unique. Differences in structure and appearance within a panel can occur. We recommend to allow time for the wood acclimatise to its new environment before processing. Storage should be in an area with constant temperature/humidity.

MDF



Material Features

Material: MDF

Finish: untreated

Cutting method: laser, saw

Sheet size: 1220 x 600 mm
600 x 300 mm (pack of 10)

- Smooth surface quality
- Furniture grade MDF
- Homogenous fibre structure
- Great results even in fine-detail laser cutting due to high fibre density
- Ideal for architectural model making, prototyping, giftware, toys, arts and crafts



Cut to size service



1220 x 600 mm
3,0 68995
6,0 120164



600 x 300 mm
3,0 68996
6,0 119957



Wood is a living, natural material and each panel is unique. Differences in structure and appearance within a panel can occur. We recommend to allow time for the wood acclimatise to its new environment before processing. Storage should be in an area with constant temperature/humidity.

TroCraft Eco



Material Features

Material: natural cellulose

Finish: untreated

Cutting method: saw, laser

Sheet size: 600 x 300 mm (pack of 5)

- Laser material made of recyclable resources - out of pure cellulose fiber
- Produced without using additives, is fully biodegradable and emission-free
- Create sustainable toys, interiors or applications for furniture making, vehicle construction and tool making



Cut to size service



1,0	145324
1,5	145325
3,0	145326

LaserCork



Material Features

Material: Cork

Finish: untreated

Cutting method: saw, laser

Sheet size: 600 x 300 mm (pack of 5)

- Natural, environmentally friendly laser material
- The fine grain structure and the beautiful dark brown engraving make LaserCork suitable for many different creative, decorative or functional applications with a natural touch
- Relatively low laser power is sufficient for cutting our LaserCork
- LaserCork is the perfect laser material for coasters and wall decorations such as a world map or pin board



Cut to size service



0,8	150638
1,5	150640
3,0	150641

LaserLeather



Material Features

Material: 100% PU leather

Finish: matte

Cutting method: saw, guillotine

Sheet size: 813 x 508 mm (pack of 5)

- High-quality two-tone artificial leather with a smooth surface for an excellent touch
- Even very fine engravings reveal the second color layer well
- Specially selected color combinations offer a wide range of use
- From bags, backpacks, labels, jewelry, or a stylish pencil roll - it can be transformed into many unique items due to its easy processing

Cut to size service



Black/White gold
0,65 165274



Black/Blue
0,65 165279



Brown/Black
0,65 165276



Cork
0,65 192464



Grey/Silver
0,65 192462



Navy/Silver
0,65 192463

Gifts

Grow your business by personalizing gifts and ready-made products for your customers. Apply individual laser engravings to these trendy products and benefit from this simple and cost-effective solution.

We are constantly expanding this product range, please check our webshop for the latest additions.





/ SETTING NEW STANDARDS

Laserable Bottles



Material Features

Material: high-grade 304 stainless steel
Finish: matte, scratch resistant
Capacity: 500 ml

- Made of high-grade 304 stainless steel with a colored coating that is perfect for laser engraving
- Double-walled vacuum insulation keeps ice cold drinks cool up to 24 hours, hot drinks keep their temperature up to 12 hours
- The bottles are not recommended for dishwasher cleaning.
- Engraving one or two passes provides different effects with intense colors like blue or red.



Yellow
500 ml 163878



Green
500 ml 163879



Turquoise
500 ml 163881



Blue
500 ml 150277



Plum
500 ml 163902



Navy
500 ml 163880



Red
500 ml 163903



Powder Pink
500 ml 163904



Black
500 ml 163910



White
500 ml 186350



Pink glitter
500 ml 163908



Mint glitter
500 ml 163909



Gold glitter
500 ml 163905



Silver glitter
500 ml 163906

Laserable Mugs & Tumblers



Material Features

Material: high-grade 304 stainless steel

Finish: soft

Capacity: 360 ml, 480 ml

- Whether for coffee, tea or a cold lemonade - these mugs and tumblers made of high-grade 304 stainless steel are the product of choice
- Equipped with a lid with lock
- Double-walled vacuum insulation keeps hot drinks their temperature up to 4 hours, ice cold drinks cool up to 8 hours
- Notes: not recommended for dishwasher cleaning. Please check our website for latest colors!

Mugs



White
360 ml 190461



Black
360 ml 163911



Turquoise
360 ml 163912



Red
360 ml 163913



Purple
360 ml 163914



Pink glitter
360 ml 163915



Mint glitter
360 ml 163918



Silver glitter
360 ml 163917



Gold glitter
360 ml 163916

Tumblers



Black
480 ml 163920



Pink
480 ml 163919

Laserable Hip Flask



Material Features

Material: high-grade 304 stainless steel

Finish: matte

Capacity: 240 ml

- Made out of high-grade 304 stainless steel
- Colored coating that can be easily laser engraved
- Personalizing the hip flask by adding a special image or artwork with a laser will create the perfect gift for many special occasions
- Whether for a fisherman, a hunter, at the Christmas market or for a stag party - a personalized hip flask is definitely a highlight
- Notes: not recommended for dishwasher cleaning. Please check our website for latest colors.



Black
240 ml 158407



Mint
240 ml 158409



Pink
240 ml 158408



Silver*
240 ml 158405



*For a black laser engraving on blank stainless steel using a CO₂ laser we recommend the use of our marking solutions (e.g. markSolid spray/paste). Alternatively, a black marking can be created with a fiber laser

Aluminum Tags (Pet tags, Rounds)



Material Features

Material: Anodized Aluminum (except military tag stainless steel)

Size: available in a wide range of sizes, shapes and colors

Package quantity: pack of 20 pieces

- When laser engraved, the engraving appears in white
- Engraving with a mechanical engraving machine is possible – in this case the aluminum core will appear in silver
- Create a personalized label
- Ideal as a gift, giveaway or a souvenir

Heart with hole



Small: 24 x 20mm,
Hole size approx. 3,0 mm
Large: 38 x 33 mm
Hole size approx. 3,0 mm

Color	Order No.	Order No.
	small	large
black	122244	122235
blue	122245	122237
red	122246	122238
gold	122248	122239
green	122249	122240
pink	122250	122241
violet	122251	122242
silver	122252	122243

Round with loop



Diameter 25 mm
Hole size approx. 3,0 mm

Color	Order No.
black	122172
blue	122173
red	122174
gold	122175
green	122176
pink	122177
violet	122178
silver	122179

Round with hole



Small: Diameter 25mm
Hole size approx. 3,0 mm
Large: diameter 30 mm
Hole size approx. 3,5 mm

Color	Order No.	Order No.
	small	large
black	122188	122180
blue	122189	122181
red	122190	122182
gold	122191	122183
green	122192	122184
pink	122193	122185
violet	122194	122186
silver	122195	122187

Dog bone



Small: 21 x 31mm
Hole size approx. 2,5 mm
Large: 40 x 27 mm
Hole size approx. 3,5 mm

Color	Order No.	Order No.
	small	large
black	122205	122197
blue	122206	122198
red	122207	122199
gold	122208	122200
green	122209	122201
pink	122210	122202
violet	122211	122203
silver	122212	122204

Military tag



50 x 29mm,
Hole size approx. 3,0 mm

Color	Order No.
black	122253
blue	122254
red	122255
gold	122256
green	122257
pink	122258
violet	122259
silver	122260
Stainless steel blank	122261

Rounds



Material Features

Material: aluminum, plastic

Finish: gloss, matte

Size: 20 mm / 25 mm / 30 mm / 35 mm / 40 mm / 50 mm diameter

Minimum order quantity: 25 pieces

- Individual round blanks in different sizes, with or without drill hole
- Also available self-adhesive
- Other plastics such as TroLase and aluminum with thickness 0,5 mm on request
- Ideal for labels or type plates

	Diameter	Color
Aluminum natural matte 1,0 mm thickness	20 mm	natural
	25 mm	natural
	30 mm	natural
	35 mm	natural
	40 mm	natural
	50 mm	natural
Aluminum natural gloss 1,0 mm thickness	20 mm	natural
	25 mm	natural
	30 mm	natural
	35 mm	natural
	40 mm	natural
	50 mm	natural
Aluminum colored matte 1,0 mm thickness	20 mm	colored
	25 mm	colored
	30 mm	colored
	35 mm	colored
	40 mm	colored
	50 mm	colored
Aluminum colored gloss 1,0 mm thickness	20 mm	colored
	25 mm	colored
	30 mm	colored
	35 mm	colored
	40 mm	colored
	50 mm	colored
Plastic: TroPly and TroPly Metallic 1,6 mm thickness	20 mm	colored
	25 mm	colored
	30 mm	colored
	35 mm	colored
	40 mm	colored
	50 mm	colored

Supplies

Looking for engraving supplies that simplify and support your daily workflow? From workholding mats to pins and magnets for name badges to laser marking solutions (so you can use your CO₂ laser on metals) you will find in our range. Here you will also find the laser rubber we use for our Trodat stamps, as well as various acrylic colors for reverse engraved areas.





Laser marking solutions



Material Features

Material: pigments and particles embedded in a carrying liquid

Usage: when laser marked, the particles melt together with the surface of the core material (e.g. metal), leaving a permanent dark marking

Consumption: recommended within 6 months after delivery

- By applying the spray or paste on the blank surface (metal, glass, ceramic), CO₂ lasers, as well as fiber or Nd:YAG lasers, produce a permanent black marking
- This marking is highly resistant to mechanical and chemical stresses as well as high temperatures
- High contrast and resolution can easily be achieved
- Perfect for bar coding, product serialisation, logos or individual pieces

Laser marking metals

	Product	Size	Order No.
aerosol	markSolid Spray Metal 114*	300 ml	57792
	CerMark LMM 6000	340 g	4767
	Thermark LMM 14	170 g	15891
paste	markSolid Paste Metal 015	50 g	110200
	markSolid Paste Metal 015	100 g	110201
	CerMark LMM 6000	250 g	48391
tape	LMM 6018 Tape	25 mm x 15 metres	58243
	LMM 6018 Tape	50 mm x 15 metres	64752

Laser marking ceramics

	Product	Size	Order No.
aerosol	CerMark Ultra Spray	340 g	175645

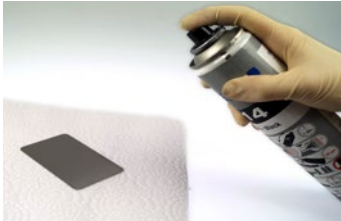
* Spray not recommended for airfreight

How to use laser marking solutions



1. Preparation

- **Surface Cleaning:** Product needs to be applied directly on the blank surface (metal, glass, ceramic). The surface has to be dry and clean, free of dust, grease, silicone, etc.
- **Spray:** Shake the spray well to make sure solid sediments are dissolved.
- **Pastes:** Dilute the paste with ethanol (alcohol) or water according to the description on the product label. For curved surfaces reduce the grade of dilution.



2. Applying

The more evenly and the more accurately you apply the product onto the surface, the better results you achieve. The principle „less is more“ applies often in regard to the layer thickness.

- **Spray:** Spray from 20 - 30 cm distance
- **Paste:** Apply with brush, foam or airbrush



3. Drying

The coating must be completely dry before starting the laser marking. It usually takes 1-2 minutes when dried by air, but a hot air blower (e.g. a simple hair dryer) can reduce the drying time.

Tip: You may reduce the drying time by putting the work piece in the laser with exhaust turned on.



4. Laser Marking

The products can be used for marking with CO₂ lasers, Nd:YAG lasers and fiber laser, to name a few. Differences in laser power, wave length and other factors influence the final settings required. After laser marking, excessive coating can be removed by wiping with a damp cloth or by washing with water.

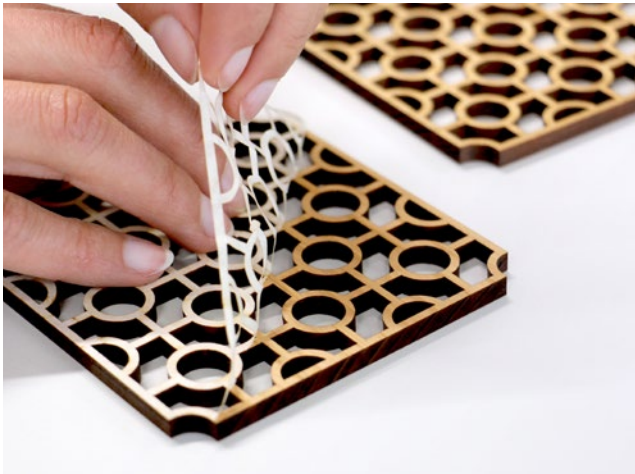


- Light-grey to brown results indicate that too much laser power or too little marking speed were used.
- If the marking can be rubbed off, too little power or too high laser speed can be the cause.
- The same result may occur if the coating is thicker than it should be, or if the material surface is not free of oil or dirt.

Our recommendations

Product	Application
markSolid Paste Metal 015 50 g, 100 g	Black marking on blank metal (stainless steel, brass, etc.) Paste is suitable for application by brush, especially for smaller areas, or by airbrush.
markSolid Spray Metal 114* 300 ml	Black marking on blank metal (stainless steel, brass, etc.) Using a spray might be the easiest way for an even coating, especially for larger areas.

TroMask



Material Features

Material: paper-based, self-adhesive masking tape

Size: 610 mm x 100 m

- For beautiful cutting results and to avoid smudge marks
- Especially with wood, for example, you save a lot of time for cleaning the material after the laser process
- Adheres easily to surfaces
- Can be removed effortlessly and without leaving any residue without damaging the surface



Laser Masking Paper
610 mm x 100 m 153614



TroMask is a Laser Masking Paper that:

- Offers very good results especially in keeping the material around cut or engraved areas clean
- Can be easily removed after the cutting process
- Helps to reduce working time, accordingly save costs.

Laser Rubber Sheets



Material Features

Material: Trodat stamp rubber

Sheet size: A4, A3

- Has been specially developed to deliver the best engraving results and highest productivity
- Choose from our laser rubber range for various stamp applications
- Regardless of whether you want to save production time, or you want to reduce odours in your production area, Trodat is the right laser rubber for your exact needs
- Trodat's laser rubbers are completely harmless with regard to occupational health and safety



Product

AERO+, AERO

Fastest odourless laser rubber

- Low odour while engraving
- Very easy to clean
- 52° (Aero+), 60° (Aero) Shore-A

Size

A4 / 2,3mm

A4 / 5mm

A3 / 2,3mm

A4 / 2,3mm

A3 / 2,3mm

Color

light grey (850211)

light grey (850211)

light grey (850211)

light grey (850208)

light grey (850208)

Order Number

131011 (A4) Aero+

144249 (A4) Aero+

130975 (A3) Aero+

34192 (A4) Aero

36877 (A3) Aero



TEMPO

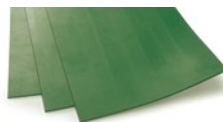
Speed laser rubber

- Up to 21% faster than standard laser rubber
- Excellent engraving and imprint quality
- 55° Shore-A

A4 / 2,3mm

orange (850206)

34242



ECO

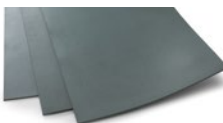
Ecological laser rubber from natural rubber

- Made from 100% natural rubber
- 55° Shore-A
- water-based ink

A4 / 2,3mm

green (850202)

34244



CLASSICO

Reliable standard laser rubber

- Solvent-resistant
- 60° Shore-A

A4 / 2,3mm

grey (850205)

34248



OLIO

Oil-resistant laser rubber

- No expansion with oil-based inks
- 55° Shore-A

A4 / 2,3mm

black (850203)

34246

Pins and Magnets



Material Features

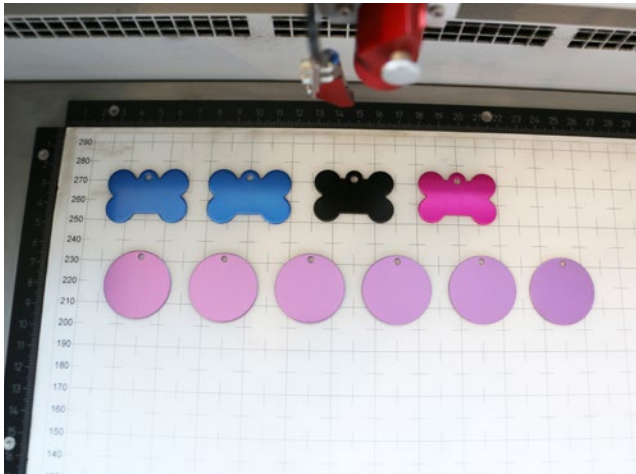
Package quantity: 20 pieces

- Offer your customers an extra service by providing finished badge fixing solutions
- Create name signs by engraving laser materials and using these pins and magnets for the reverse side



Size	Description	Order No.
42 x 7,5 mm	Pin white with adhesive	3603
51 x 9,5 mm	Pin with clutch and adhesive	9881
45 x 13 mm	Magnet large	3611
33 x 12 mm	Magnet small	12635

Workholding Mat



Material Features

Material: thin plastic with a special coating on both sides

Size: various sheet sizes for different laser bed sizes

- Holds material flat on the table - no tape, clamps or additional adhesives are required
- Allows laser and rotary users without a vacuum table to hold down a workpiece and prevent it from moving while operating
- Also recommended for applications where the vacuum table cannot be fully utilized – for example when marking or engraving a high number of small pieces
- Material can be released easily again

Seklema Workholding Mat

Product (Cut to size)	Size
Seklema 67064	1200 x 600 x 3 mm
Seklema 67064 (1/2)	600 x 600 x 3 mm
Seklema 67064 (1/4)	600 x 300 x 3 mm



A workholding mat is a reusable mat, that helps streamlining the production process:

- Holds material flat and in position if there is no a vacuum table
- Better fixation of small items which are hard to pin down by vacuum table
- Speeds up production
- Long lifetime due to “self-healing” surface and two usable sides
- Can be easily cleaned with only a soft sponge and water or mild soapy water
- Various sheet sizes available to fit different laser bed sizes

Advertising materials



Material Features

Material: modified acrylic, cast acrylic, wood

Usage: advertising materials for your customers to support you with your business

- A key element of Trotec's strategy is helping its customers become more profitable and placing customer needs at the center of its core values
- Now you can order a sample binder with a lot of different materials, colour fans and color chains to present your customers a wide range of high-quality products in different colors
- Order quality samples that your customers can touch and see in person

TroLase Series Color fans



Product	Size	Order No.
Color fan TroLase		92488
Color fan TroLase Metallic		92489
Color fan TroLase Thins	70 x 30 mm	92490
Color fan TroLase Reverse		92491
Color fan TroLase Metallic Plus		118063

TroGlass Color chains



Product	Size	Order No.
Color chain TroGlass Color Gloss		117809
Color chain TroGlass Satins		117810
Color chain TroGlass Mirror	50 x 50 mm	146539
Color chain TroGlitter		146140
Color chain TroGlass Pastel		161079
Color chain TroGlass Neon		162833

More Color fans



Product	Size	Order No.
Color fan MDF Veneer	70 x 30 mm	120783
Color fan Solid Wood	70 x 30 mm	120784
Color fan LaserPaper	100 x 60 mm	139443
Color fan LaserLeather	100 x 60 mm	166204

Sample Binder



Product	Size	Order No.
Sample Binder Laser (contains real materials of our TroLase and TroGlass Series, Metals and Wood)		99218
Sample Binder Full (contains all from S. B. Laser and additionally the TroPly Series)	250 x 210 mm	99235
Sample Binder without Metals (contains all from S. B. Full except all Metals)		147273

Material		Engraving		Use		Ply			Handling		Scores	
		Laser	Mechanical engraving	Exterior	Interior	1	2	3	Front	Reverse engraving (optional colour fill)		
Laser + Rotary	TroLase	6	●	●	●	●	●	●	●		●	
	TroLase Metallic	8	●	●	●		●		●		●	
	TroLase Metallic Plus	9	●	●	●		●		●		●	
	TroLase Reverse	10	●	●	●		●			●	●	
	TroLase ADA Signage	11	●	●	●	●			●		●	
	TroLase Thins	12	●	●		●	●		●		●	
	TroLase Textures	14	●	●	●		●		●		●	
	TroLase Lights	15	●	●			●		●		●	
	TroLase Foil	16	●	●	●		●		●		●	
	LaserFlex	17	●		●	●				●		
	Rotary	TroPly	20		●	●		●		●		●
		TroPly Metallic Plus	21		●	●		●		●		●
		TroPly Ultra	22		●	●	●	●	●	●		●
TroPly Ultra Reverse		24		●	●		●			●	●	
TroPly Satins		25		●			●		●		●	
Acrylic	TroGlass Color Gloss	28	●	●	●	●			●	○		
	TroGlass Satins	30	●	●	●	●			●	○		
	TroGlass Reverse	32	●	●	●	●			○	●		
	TroGlass Mirror	33	●	●		●			○	●		
	TroGlass Clear	34	●	●	●	●			●	●		
	TroGlass XT	35	●	●	●	●			●	●		
	TroGlitter	36	●	●		●			●	○		
	TroGlass Pastel	37	●	●	●	●			●	●		
Metal	Anodized Aluminum	40	●	●	●	●			●			
	DuraBlack®	42	●		●	●			●			
	AlumaMark®	43	●			●			●			
	Stainless Steel	44	●	●	●	●			●			
Wood	Solid Wood	48	●	●		●			●			
	Wood Veneer	49	●	●		●			●			
	Plywood	50	●	●		●			●			
	MDF	51	●	●		●			●			
	TroCraft Eco	52	●			●			●			
	LaserCork	53	●			●			●			
	LaserLeather	55	●			●	●		●			
Paper	LaserPaper	58	●			●		●				

Finishing

	Saws	Drills	Guillotine	Laser Cutting	Bevels	Hot Bendable	Screen printing	Bonding	ADA Compliant	Hot Stamping		Material
	●	●	●	●	●	●	●	●		●	6	TroLase
	●	●	●	●	●	●	●	●		●	8	TroLase Metallic
	●	●	●	●	●	●	●	●		●	9	TroLase Metallic Plus
	●	●	●	●	●	●	●	●		●	10	TroLase Reverse
	●	●	●	●	●	●	●	●	●	●	11	TroLase ADA Signage
	●	●	●	●			●	●		●	12	TroLase Thins
	●	●	●	●	●	●	●	●		●	14	TroLase Textures
			●	●				●		●	15	TroLase Lights
	●	●	●	●			●	●		●	16	TroLase Foil
			●	●							17	LaserFlex
	●	●	●		●	●	●	●		●	20	TroPly
	●	●	●		●	●	●	●		●	21	TroPly Metallic Plus
	●	●	●	●	●	●	●	●		●	22	TroPly Ultra
	●	●	●	●	●	●	●	●		●	24	TroPly Ultra Reverse
	●	●	●		●	●	●	●		●	25	TroPly Satins
	●	●		●	●	●	●	●		●	28	TroGlass Color Gloss
	●	●		●	●	●	●	●		●	30	TroGlass Satins
	●	●		●	●	●	●	●		●	32	TroGlass Reverse
	●	●		●	●		●	●			33	TroGlass Mirror
	●	●		●	●	●	●	●		●	36	TroGlass Clear
	●	●		●	●	●	●	●		●	35	TroGlass XT
	●	●		●	●	●	●	●		●	36	TroGlitter
	●	●		●	●	●	●	●		●	37	TroGlass Pastel
	●	●	●		●		●	●			40	Anodized Aluminum
	●	●	●		●						42	DuraBlack®
	●	●	●		●						43	AlumaMark®
	●	●	●		●		●	●			44	Stainless Steel
	●	●		●	●		●	●			48	Solid Wood
	●	●		●	●		●	●			49	Wood Veneer
	●	●		●	●		●	●			50	Plywood
	●	●		●	●		●	●			51	MDF
	●	●		●	●		●	●			52	TroCraft Eco
	●			●			●	●			53	LaserCork
			●	●			●	●			55	LaserLeather
				●			●	●			58	LaserPaper

Laser + Rotary

Rotary

Acrylic

Metal

Leather Wood

Paper

Speedy Laser Engraver

Profitability by Design



The Speedy laser engraving and cutting systems are the perfect choice both for entry level users as well as professional engravers. „Speedy“ – the fastest and most productive laser machines in the market: By processing at maximum speed of 4.3 m/sec and acceleration of 5g the Speedy is designed to increase your production efficiency. Thanks to the closed construction, essential components are protected from dirt and dust.

This is why you can operate without virtually any maintenance and cleaning requirements. This results in higher up-time and lowest cost of ownership. All platform sizes from 610 x 305 mm up to 1016 x 610 mm are available with a CO₂, a fiber or even both laser sources in one laser system. The patented flex function enables endless application possibilities. Use both laser sources in one job without having to change the laser source, the lenses or the focus manually.



Personalize gifts like bottles or mugs



Finest details on leather items



Engrave signs with Trotec materials

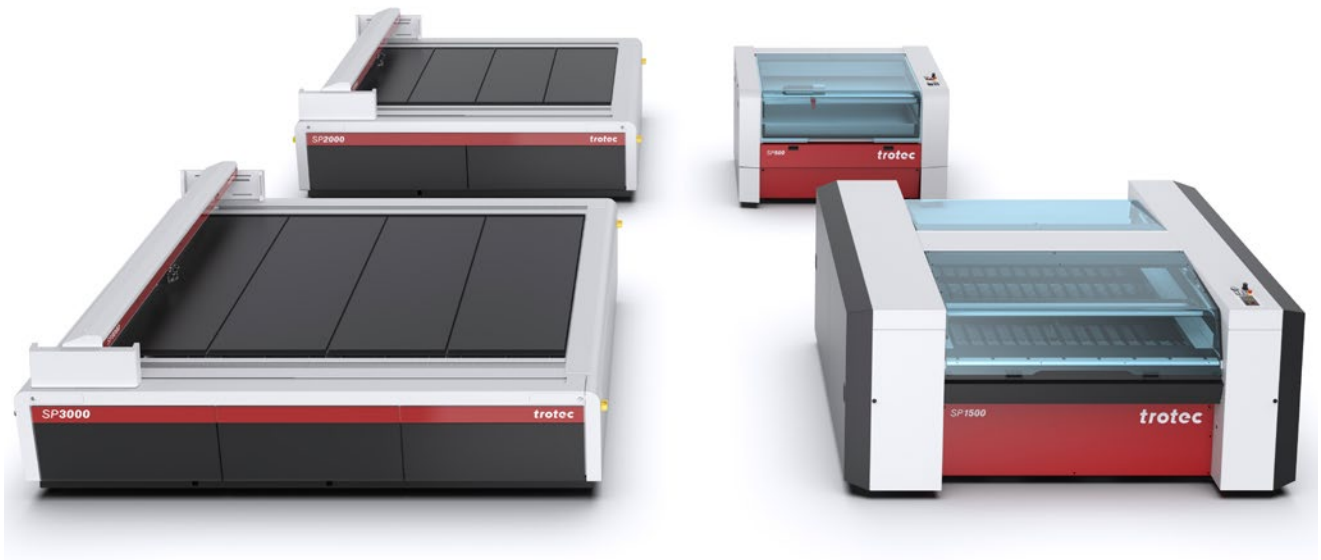
Expand your business

Speedy Laser Machines are the perfect tool for a variety of materials. Virtually any design can be realized with the laser. For example stamps can be produced within minutes and series production is also significantly streamlined.

Customize honorary prizes such as awards or trophies, personalize promotional items or discover new possibilities to expand your business.

SP Laser Cutter

Leading Large Format Laser Cutting



The SP Series is the right choice for large format CO₂ laser cutting systems. The highly efficient flatbed laser plotters are ideal for demanding large format cutting applications in plastics, wood, textiles and many more. Highest laser cutting speed, the four-sides access and Tandem Assist ensure maximum productivity. For the SP series laser cutters Trotec developed a unique, multifunctional table concept.

The ideal table for every application can be selected and replaced easily and quickly. The working areas of SP laser cutters provide enough space for all standard sheet sizes in use today – from 1.245 x 710 mm of the SP500 up to 2.210 x 3.210 mm of the SP3000. Acrylics, textile, paper, cardboard or wooden sheets can be processed efficiently and cost-saving. The SP Series is 100% developed and manufactured in Austria.



Print & cut signs with unusual shapes



Flame-polished result. Cut up to 40mm acrylic.



Laser cutting of MDF furniture.
Within seconds from design to reality.

Make your production more efficient

Laser cut displays or POP materials out of acrylics with glass-clear cut edges without additional material finishing. And besides save up to 88% of acrylics processing costs. Use the laser contour cutting of high quality printed materials like acrylics, cardboard or wood.

Whether intricate paper forms, logos or images, the results inspire with incredible detail, precision and quality. Offer new products and services and achieve more profit!

SpeedMarker Laser marking machines

Created for Automation



The use of the laser markers of the SpeedMarker series leads to enormous productivity, supports automation processes and inspires by the simple handling - both in data preparation and in daily work. The laser processing cells also offer maximum flexibility in terms of size and number of components.

Especially with SpeedMarker 1300, SpeedMarker 1350 and SpeedMarker 1600, individual large or heavy components can be handled just as easily as a large number of small components in trays. Complex marking sequences are efficiently created with the SpeedMark® software thanks to visual programming and predefined program modules. SpeedMarker series for the automated and precise marking of various plastics and metals.



Industrial tags for machines and parts



Code marking on difficult placements



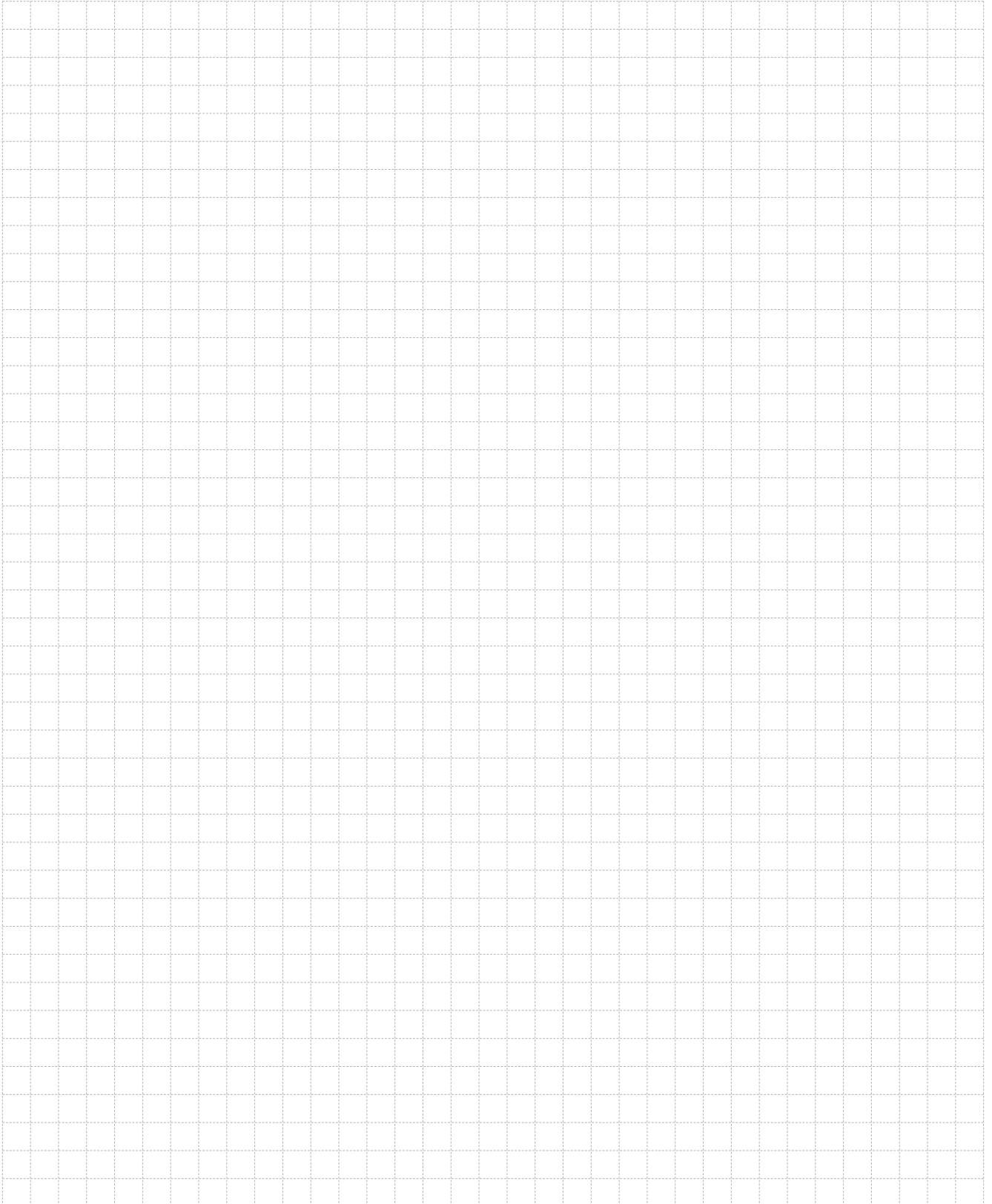
Durable marks a part's lifetime long

Durable. Economical. Flexible

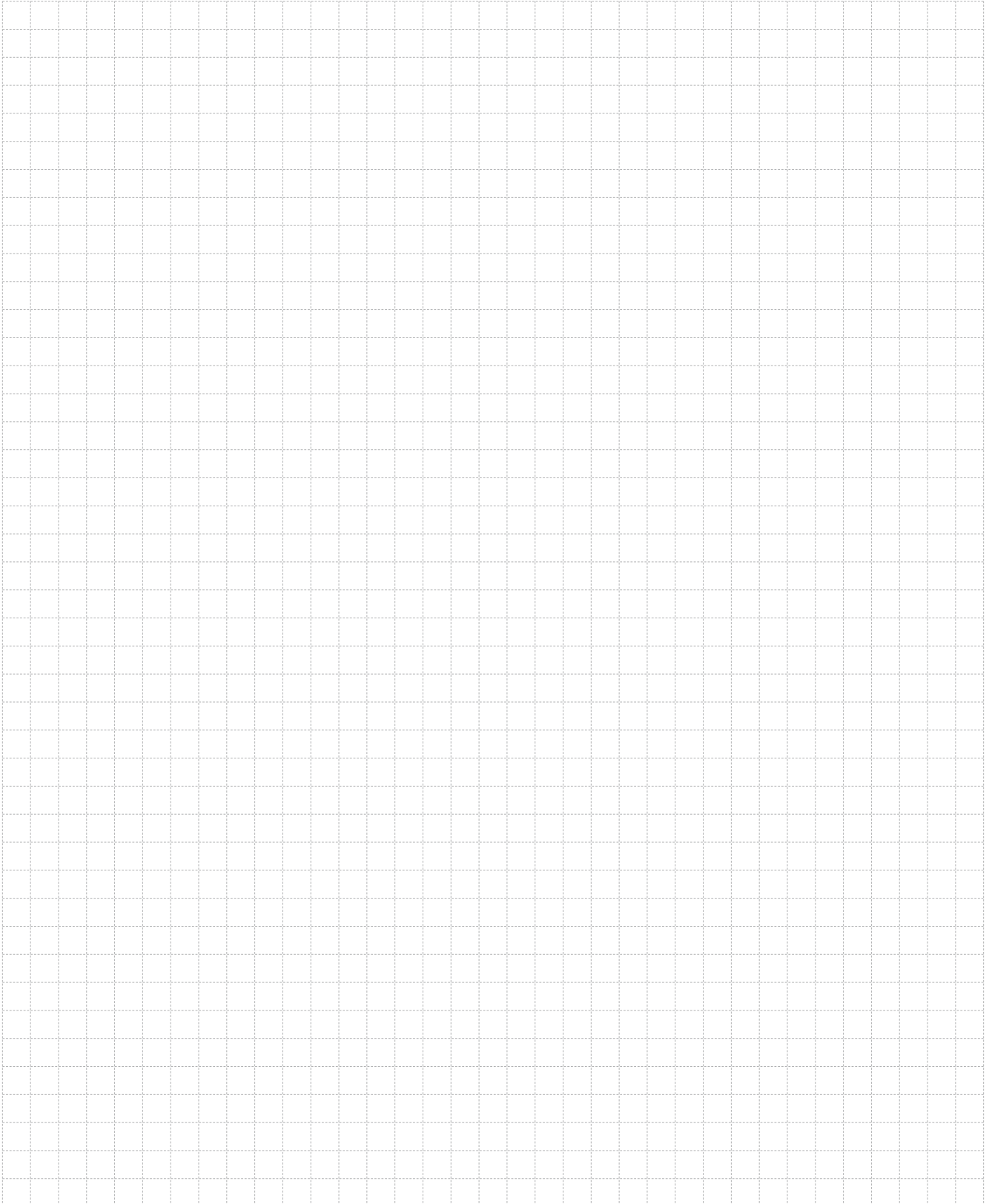
The use of SpeedMarker marking lasers supports automation processes. Due to the simple laser marking of dynamic data and infinite possibilities in AdvancedScripting®, the SpeedMarker series is exactly the right choice for machine manufacturing, electronic industry and job shoppers.

Individual components as well as large batch sizes are marked with a Galvo laser class 2 system for complete traceability, brand communication or with functional markings.

Notes



Notes



Price list

Contact us - we are happy to send you more information and our price list!

Trotec Laser South Africa
3 Appel Road, Kramerville Sandton
Tel. +27 (0) 11 262 1400
info@troteclaser.co.za

Any color deviations between the images shown in the catalog and actual items are due to electronic depiction or typographical reasons and are not considered mistakes.

Please find our latest product range on our website.

Contact us:
Trotec Laser South Africa
3 Appel Road
Kramerville, Sandton
Johannesburg
+27 (0) 11 262 1400
info@troteclaser.co.za

trotec



trotec-materials.com